

# Shaft supports


**Material, surface finish:**

Aluminium, natural finish

**Sample order:**

nlm 21565-12375X0600

**Note:**

These shaft supports are required to support shafts in conjunction with linear ball bearings of an open design.

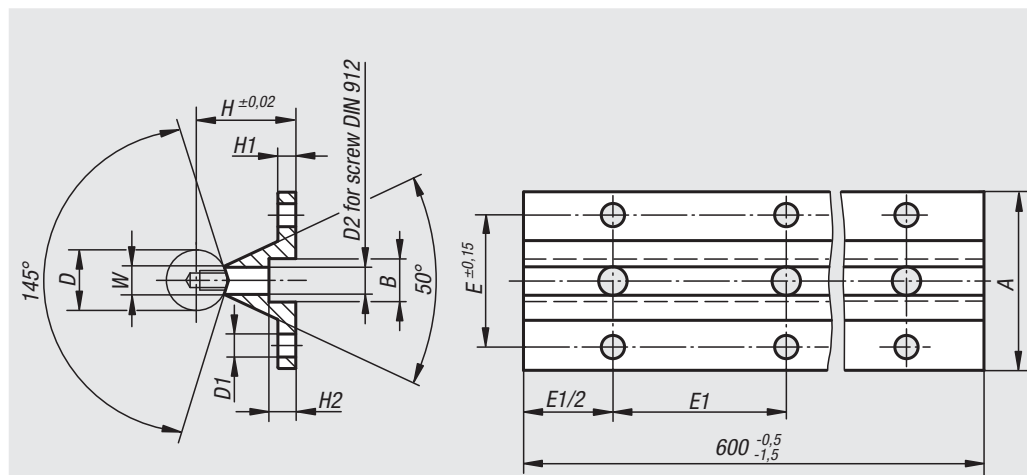
Continuously supported shafts enable particularly firm bearings; however, in many cases support in sections suffices.

The standard length of our shaft supports is 600 mm. These pieces are composed of short or, optionally, long supports.

**Accessory:**

Precision guide shafts with installation drill holes 21590.

Fastening screws 07160.



| Order No.        | Size | A  | B   | D  | D1  | D2     | E  | E1  | H  | H1 | H2   | W    | Approx. weight kg |
|------------------|------|----|-----|----|-----|--------|----|-----|----|----|------|------|-------------------|
| 21565-12375X0600 | 12   | 40 | 8   | 12 | 4,5 | M4x16  | 29 | 75  | 22 | 5  | 5    | 5,8  | 0,520             |
| 21565-16500X0600 | 16   | 45 | 9,5 | 16 | 5,5 | M5x20  | 33 | 100 | 26 | 5  | 6    | 7    | 0,640             |
| 21565-20500X0600 | 20   | 52 | 11  | 20 | 6,6 | M6x25  | 37 | 100 | 32 | 6  | 6,5  | 8,3  | 0,900             |
| 21565-25600X0600 | 25   | 57 | 14  | 25 | 6,6 | M8x25  | 42 | 120 | 36 | 6  | 8,5  | 10,8 | 1,080             |
| 21565-30750X0600 | 30   | 69 | 17  | 30 | 9   | M10x30 | 51 | 150 | 42 | 7  | 10,5 | 11   | 1,430             |