

# Wedge clamp with sequence valve control

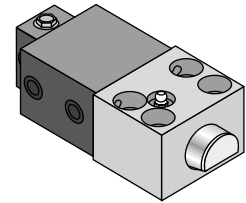
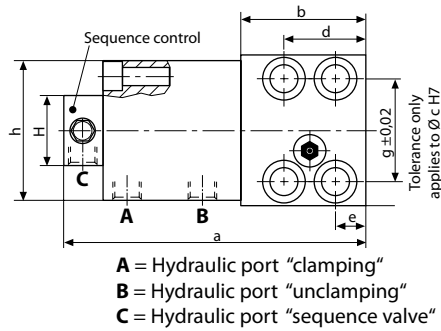
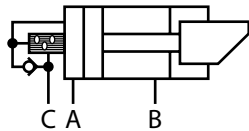
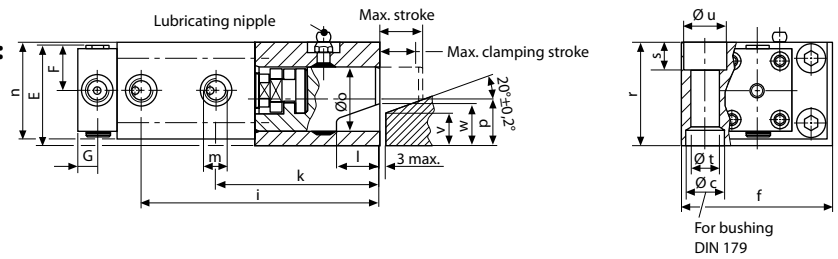


**ROEMHELD**  
HILMA ■ STARK

## Wedge clamps with hydraulic position monitoring, suitable for high temperatures:

An additional valve block on the standard wedge clamp enables hydraulic control of the clamping position. Only after the last wedge clamp has been clamped is the machine control released by a pressure switch on the pressure generator.

Resistant to temperatures of up to 160°C  
(higher temperatures on request)



\* In the case of the 25 kN version, the lubricating nipples protrude by 5 mm and are offset by 9.5 mm

**\*Clamping force \*\*Permissible retention force** (for details, see 2.2400, page 2)

	25	50	100	160	250	400	630
<b>Max. clamping force * (kN)</b>	<b>25</b>	<b>50</b>	<b>100</b>	<b>160</b>	<b>250</b>	<b>400</b>	<b>630</b>
Perm. retention force** (kN)	35	65	130	210	320	520	820
Screw property class 8.8							
<b>Max. operating pressure (bar)</b>	<b>350</b>	<b>275</b>	<b>350</b>	<b>350</b>	<b>350</b>	<b>350</b>	<b>350</b>
Cylinder-Ø (mm)	25	40	50	63	80	100	125
Max. stroke (mm)	20	25	25	30	32	40	40
Clamping stroke (from/to) (mm)	15 – 18	18 – 22	19 – 22	23 – 27	24 – 29	30 – 36	30 – 36
Max. oil consumption (cm <sup>3</sup> )	10	31	49	94	161	314	491
Sequence control at (mm)	12	14	14	17	17	22	22
a (mm)	152	187	220	262	302	345	410
b (mm)	58	78	100	125	150	180	225
Ø c H7 x depth (mm)	18/7	26/9	30/11	35/11	48/13	55/16	62/16
d (mm)	38	46	58	75	78	95	108
e (mm)	14	16	20	25	26	32	38
f (mm)	70	95	120	150	200	240	280
g (mm)	48	65	85	106	140	180	210
h (mm)	65	85	100	125	160	200	230
i (mm)	111	146	177	210	246	285	344
k (mm)	76	102	127	151	184	215	272
l (mm)	20	25	26	32	40	45	50
m	G ¼	G ¼	G ¼	G ½	G ½	G ½	G ½
n (mm)	45	63	75	95	120	150	180
Ø o (mm)	30	40	55	70	80	100	125
p (mm)	21,5	28	37	49	55	75	85
r (mm)	48	65	80	105	125	160	190
s (mm)	13	18	20	26	32	38	44
Ø t (mm)	13	17	21	26	33	39	45
Ø u (mm)	20	26	32	40	48	57	66
v (mm)	15	18	25	30	30	50	60
w (mm)	19,5	23,5	30,5	37,0	38,0	60	70,0
E (mm)	48	68	75	89	96,5	116,5	131,5
F (mm)	22,5	31,5	37,5	47,5	60	75	90
G (mm)	16	14	14	16	16	16	16
H (mm)	64	48	48	90	90	90	90
Screw DIN 912-8.8 (4 pieces)	M 12	M 16	M 20	M 24	M 30	M 36	M 42
Tightening torque (Nm)	86	210	410	710	1450	2520	4050
Weight (kg)	3,0	6,5	11,4	21,7	41	74,7	126
<b>Part no.</b>	<b>8.2403.2500</b>	<b>8.2404.2500</b>	<b>8.2405.2500</b>	<b>8.2406.2500</b>	<b>8.2407.2500</b>	<b>8.2408.2500</b>	<b>8.2409.2500</b>
<b>Accessories</b> Bushings DIN 179	12 x 12	17 x 16	21 x 20	26 x 20	32 x 25	38 x 30	44 x 30
<b>Part no.</b>	<b>3300 285</b>	<b>3300 287</b>	<b>3300 288</b>	<b>3300 289</b>	<b>3300 420</b>	<b>3300 430</b>	<b>3300 440</b>