

Elastomer dog couplings

with conical hub and clamping ring (similar to DIN 69002)



Material, surface finish:

Elastomer spider in polyurethane, shore hardness 98-A.
Hub in aluminium. Conical ring in tempered steel

Sample order:

nIm 23021-010,
D1 = 6
D2 = 6
(The hubs are supplied predrilled).

Note:

This series of couplings is particularly suitable for use in main spindle drives resp. boring spindle drives for high speeds. The two clamping ring hubs must be mounted on the shaft ends with the given tightening torque of the screw before the plug-in assembly. The assembly force can be minimised by slight oiling of the spider.

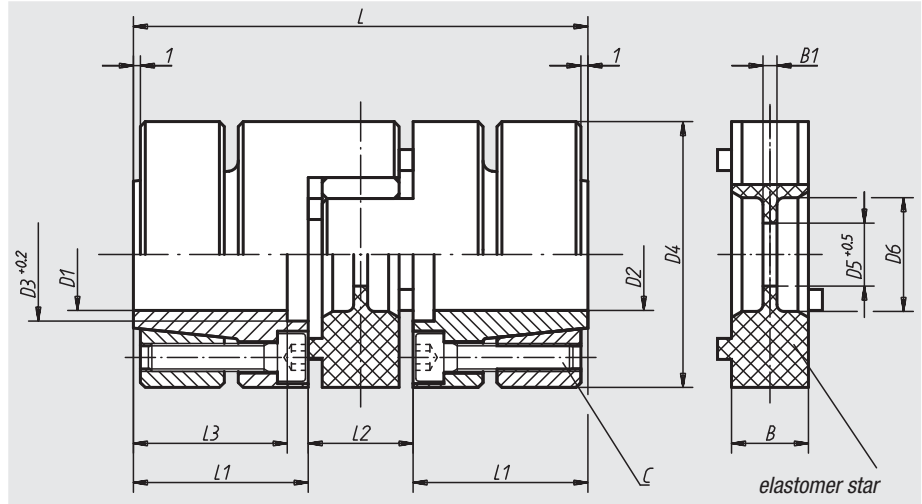
Assembly:

The seat shaft / hub is to be selected as transitional seat.
Admissible seat clearance shaft / hub: max. 0.02 mm.
E.g. shaft: Ø 25 k6
borehole: Ø 25 G6.

Boreholes which are smaller than D min. are possible; but an optimal transfer of the nominal torque of the coupling can not be guaranteed in this case.

On request:

Desired hub holes D1 and D2 separately with tolerance class or tolerance zone.



Order No.	Size	Nominal torque Nm	Moment of inertia (10 ⁻³ kgm ²)	Static resistance to torsion Nm/arcmin	Max. axial shaft displacement ±	Max. lateral shaft displacement	Radial spring stiffness N/mm	Tightening torque of screws (Nm)	Revolutions per minute max.
23021-010	10	10	0,015	0,04	0,5	0,1	600	1,8	20000
23021-017	17	17	0,05	0,24	0,5	0,1	2100	4	18000
23021-043	43	43	0,19	0,4	0,5	0,1	2500	8	14500
23021-060	60	60	0,28	0,6	0,5	0,1	2600	8	13000
23021-150	150	150	0,65	1,05	1	0,1	3300	8	11000
23021-320	320	320	2	2	1	0,12	4500	35	9000
23021-500	500	500	5,6	5,8	1	0,15	5900	67	7500
23021-700	700	700	13	8	1	0,15	7000	115	6000

Order No.	D1/D2 predrilled	D1/D2 min.	D1/D2 max.	D3	D4	D5	D6	L	L1	L2	L3	B	B1	C (DIN 912-12.9)	Approx. weight g
23021-010	6	6	14	17	32	8,5	10,5	50	18,5	13	15,5	10	2	4x M3	110
23021-017	9	9	19	22	40	9,5	18	66	25	16	21	12	3	6x M4	280
23021-043	10	12	24	29	50	12,5	27	78	30	18	25	14	3	4x M5	400
23021-060	12	12	26	30	55	12,5	27	78	30	18	25	14	3	4x M5	600
23021-150	12	17	36	40	65	14,5	30	90	35	20	30	15	4	8x M5	900
23021-320	18	20	40	46	80	16,5	38	114	45	24	40	18	4	4x M8	1900
23021-500	20	22	48	58	100	20,5	47	138	55	28	49	22	5	4x M10	4500
23021-700	24	25	60	72	120	22,5	58	155	61	33	54	25	6	4x M12	7000

01000
02000
03000
04000
05000
06000
07000
08000
09000
20000
21000
22000
23000