

Cardan double joints with slide bearing

DIN 808



Material:

Steel

Surface finish:

Joint and slide bearing hardened

Sample order:

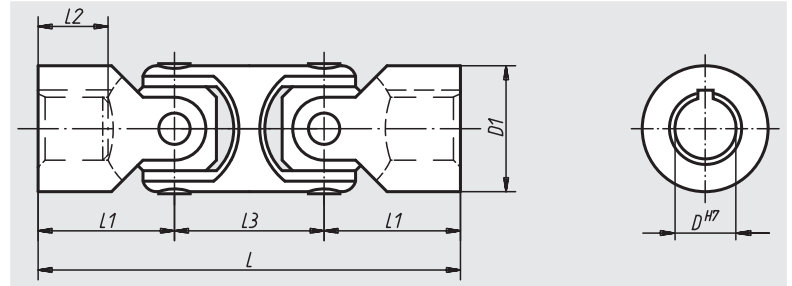
nIm 23404-06056

Note:

Cardan double joints with slide bearing can be swivelled by 90°.

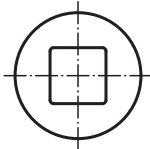
Max. transferable torque (Nm) at 150 r.p.m.;
operation angle $\alpha < 5^\circ$.

* Bore hole depth is smaller than DIN 808.

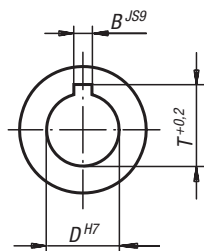


On request:

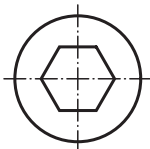
square



feather slot to DIN 6885-1



hexagon



Order No. Locating hole without slot	Order No. Locating hole with slot	D	D1	L	L1	L2	L3	B	T	Max. torque Nm	static fracture torque in Nm	Approx. weight kg
23404-06056	-	6	16	56	17	9*	22	2	7	7	40	0,055
23404-08062	23404-108062	8	16	62	20	11*	22	2	9	7	40	0,080
23404-10074	23404-110074	10	20	74	24	12*	26	3	11,4	16	90	0,145
23404-12086	23404-112086	12	25	86	28	14*	30	4	13,8	26	150	0,240
23404-16104	23404-116104	16	32	104	34	16*	37	5	18,3	52	300	0,445
23404-20128	23404-120128	20	40	128	41	20*	47	6	22,8	100	650	0,860
23404-25160	23404-125160	25	50	160	52	25*	56	8	28,3	210	1200	1,680