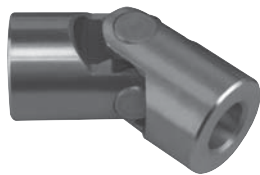


# Cardan single joints with needle bearing

DIN 808



**Material:**

Steel

**Surface finish:**

Cardan shaft ground, natural finish

**Sample order:**

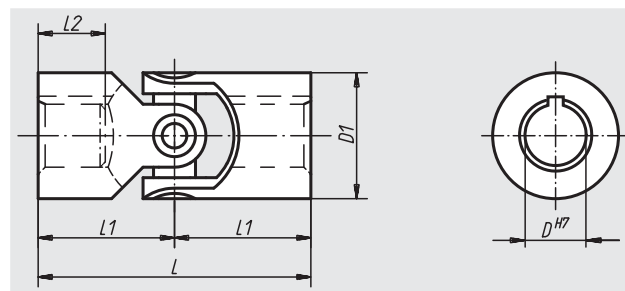
nIm 23406-10048

**Note:**

Cardan single joints with needle bearing are used for transferring speeds between 1000 r.p.m. up to 4000 r.p.m. They have a minimal clearance and are maintenance free.

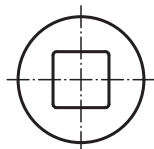
Max. transferable torque (Nm) at 150 r.p.m.;  
operation angle  $\alpha < 5^\circ$ .

\* Bore hole depth is smaller than DIN 808.

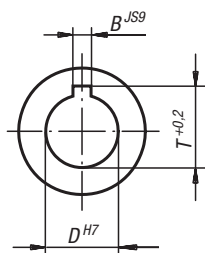


**On request:**

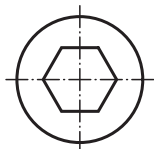
square



feather slot to DIN 6885-1



hexagon



Order No. Locating hole without slot	Order No. Locating hole with slot	D	D1	L	L1	L2	B	T	Max. torque Nm	static fracture torque in Nm	Approx. weight kg
23406-10048	23406-110048	10	20	48	24	12*	3	11,4	10	80	0,085
23406-12056	23406-112056	12	25	56	28	14*	4	13,8	16	120	0,130
23406-16068	23406-116068	16	32	68	34	16*	5	18,3	35	250	0,235
23406-20082	23406-120082	20	40	82	41	20*	6	22,8	80	500	0,455
23406-25104	23406-125104	25	50	104	52	25*	8	28,3	130	800	0,975
23406-30166	23406-130166	30	63	166	83	38*	8	33,3	240	1500	2,850
23406-35140	23406-135140	35	70	140	70	35*	10	38,3	360	2200	3,150