

Ball-type linear drives, rolled

with flange nut DIN 69051 Part 5



Material:

Spindle, steel 1.1213;
nut, steel 1.3505;
deflector, plastic

Surface finish:

Spindle, rolled, inductively hardened to 62 ± 2 HRC and polished;
nut, ground, track inductively hardened to 62 ± 2 HRC and polished

Sample order:

nIm 24055-16052X0600
(Please indicate total length L)

For processing the ends, a detailed customer design is required.

Note:

Ball-type linear drive with gothic pointed arch profile with 5 mm or 10 mm pitch. Single-start, ascending to the right. Ball screw-flange nut according to DIN 69051 Part 5 with flange.
Manufactured according to accuracy class C7 (tolerance $\pm 50 \mu / 300$ mm). Without pre-stressing, with axial play P0 (max. 0.08 mm)

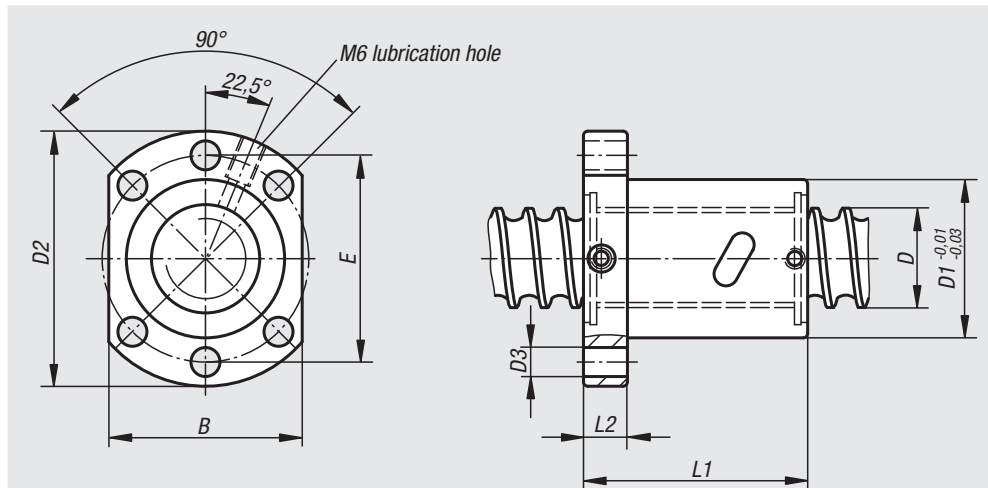
On request:

We manufacture ball screws at your request on the basis of a detailed design.
Max. production lengths 5600 mm.

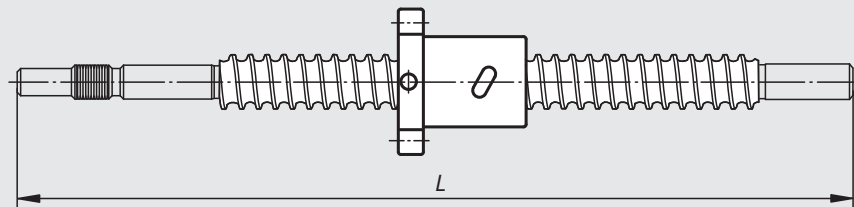
Other accuracy classes and pre-stressings available (see Technical Information).

Attention:

The flange nut must not be removed without assembly aid of the spindle, otherwise the balls fall out.



Example of shaft machining:



Order No.	D	D1	Pitch	D2	D3	B	E	L1	L2	Ball-Ø	Number of bearing rotation paths	Dynamic base loads N	Static base loads N	Stiffness K (N/µm)
24055-16052X	16	28	5	48	5,5	40	38	50	10	3,175	4	8880	15250	200
24055-20052X	20	36	5	58	6,6	44	47	51	10	3,175	4	9990	19950	250
24055-25052X	25	40	5	62	6,6	48	51	51	10	3,175	4	11190	25810	350
24055-32052X	32	50	5	80	9	62	65	52	12	3,175	4	12640	34030	400
24055-32102X	32	50	10	80	9	62	65	90	12	6,35	4	30930	61020	400