

# Ball-type linear drives, rolled

with screw-in cylinder nut



### Material:

Spindle, steel 1.1213;  
nut, steel 1.3505;  
deflector, plastic

### Surface finish:

Spindle, rolled, inductively hardened to  $62 \pm 2$  HRC and polished;  
nut, ground, track inductively hardened to  $62 \pm 2$  HRC and polished

### Sample order:

nIm 24060-16052X0600

(Please indicate total length L)

For processing the ends, a detailed customer design is required.

### Note:

Ball-type linear drive with gothic pointed arch profile with 5 mm or 10 mm pitch. Single-start, ascending to the right. Ball screw-cylinder nut with screw-in thread according to ISO 3408 (DIN 69051).

Manufactured according to accuracy class C7 (tolerance  $\pm 50 \mu / 300$  mm). Without pre-stressing, with axial play P0 (max. 0.08 mm).

### On request:

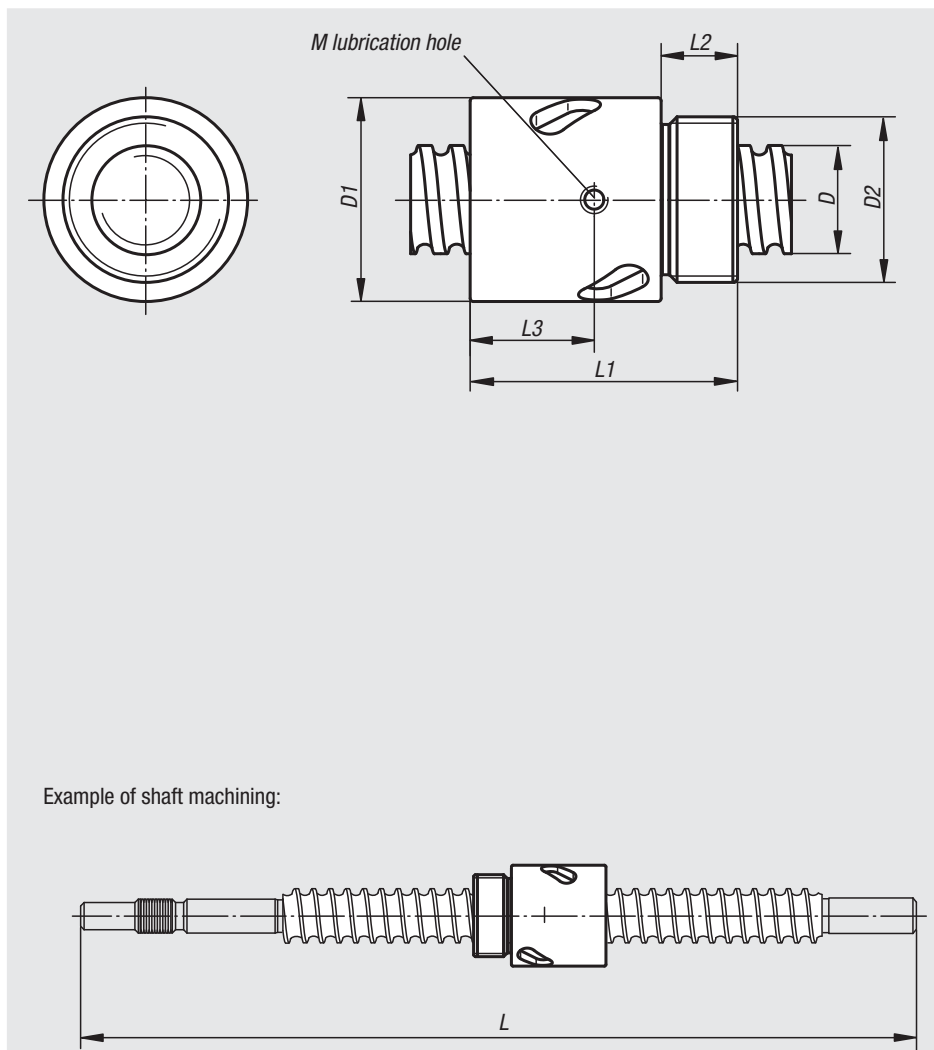
We manufacture ball screws at your request on the basis of a detailed design.

Max. production lengths 5600 mm.

Other accuracy classes and pre-stressings available (see Technical Information).

### Attention:

The screw-in cylinder nut must not be removed without assembly aid of the spindle, otherwise the balls fall out.



Order No.	D	Pitch	D1	D2	L1	L2	L3	M	Ball-Ø	Number of bearing rotation paths	Dynamic base loads N	Static base loads N	Stiffness K (N/µm)
24060-16052X	16	5	32,5	M26x1,5	42	12	-	-	3,175	4	8880	15250	200
24060-20052X	20	5	38	M35x1,5	45	15	-	-	3,175	4	9990	19950	250
24060-25052X	25	5	43	M40x1,5	69	19	32	M6	3,175	4	11190	25810	350