

Loose bearing units



Material:

Housing, steel

Surface finish:

Housing, black oxide finish

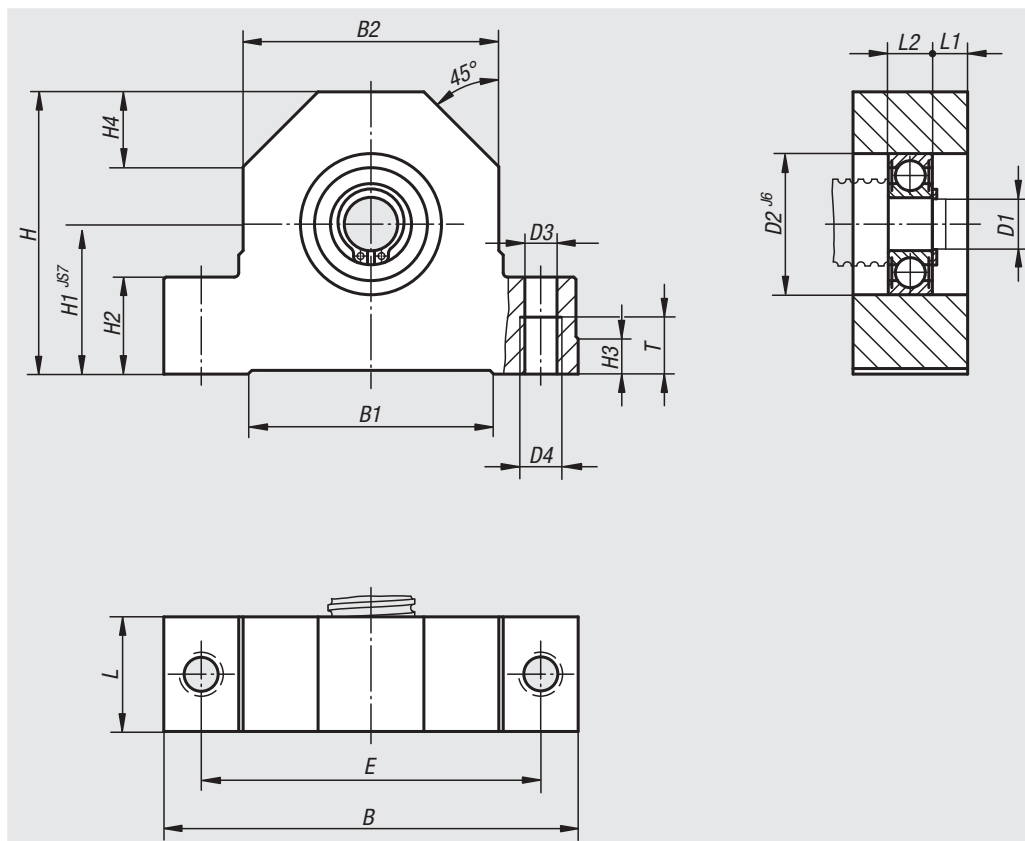
Sample order:

nIm 24074-010

Note:

The shaft height of the spindle bearings is aligned with the solid bearing units 24072 and the housings for flange nuts 24070. The housings may be screwed on from above or below. Double-sided stop angles facilitate the adjustment of the unit.

Fully ready-to-install loose bearing units with grooved ball bearing.



Order No.	Suitable for spindle-Ø	B	B1	B2	D1	D2	D3	D4	E	H	H1	H2	H3	H4	L	L1	L2	T	Approx. weight kg
24074-010	16	86	50	52	10	30	8,4	M10	68	58	32	22	7	15	24	7,5	9	15	0,520
24074-012	20	94	58	60	12	32	8,4	M10	77	64	34	22	7	17	26	8	10	15	0,690
24074-015	20	108	63	66	15	35	10,5	M12	88	72	39	27	10	19	28	8	12	18	0,970
24074-017	25	108	63	66	17	35	10,5	M12	88	72	39	27	10	19	28	8	12	18	0,960
24074-020	32	112	70	72	20	47	10,5	M12	92	78	42	27	10	20	34	10	14	18	1,230