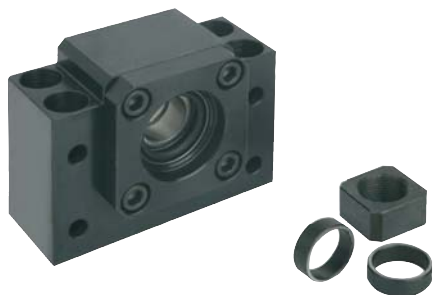


# Solid bearing units

in block version

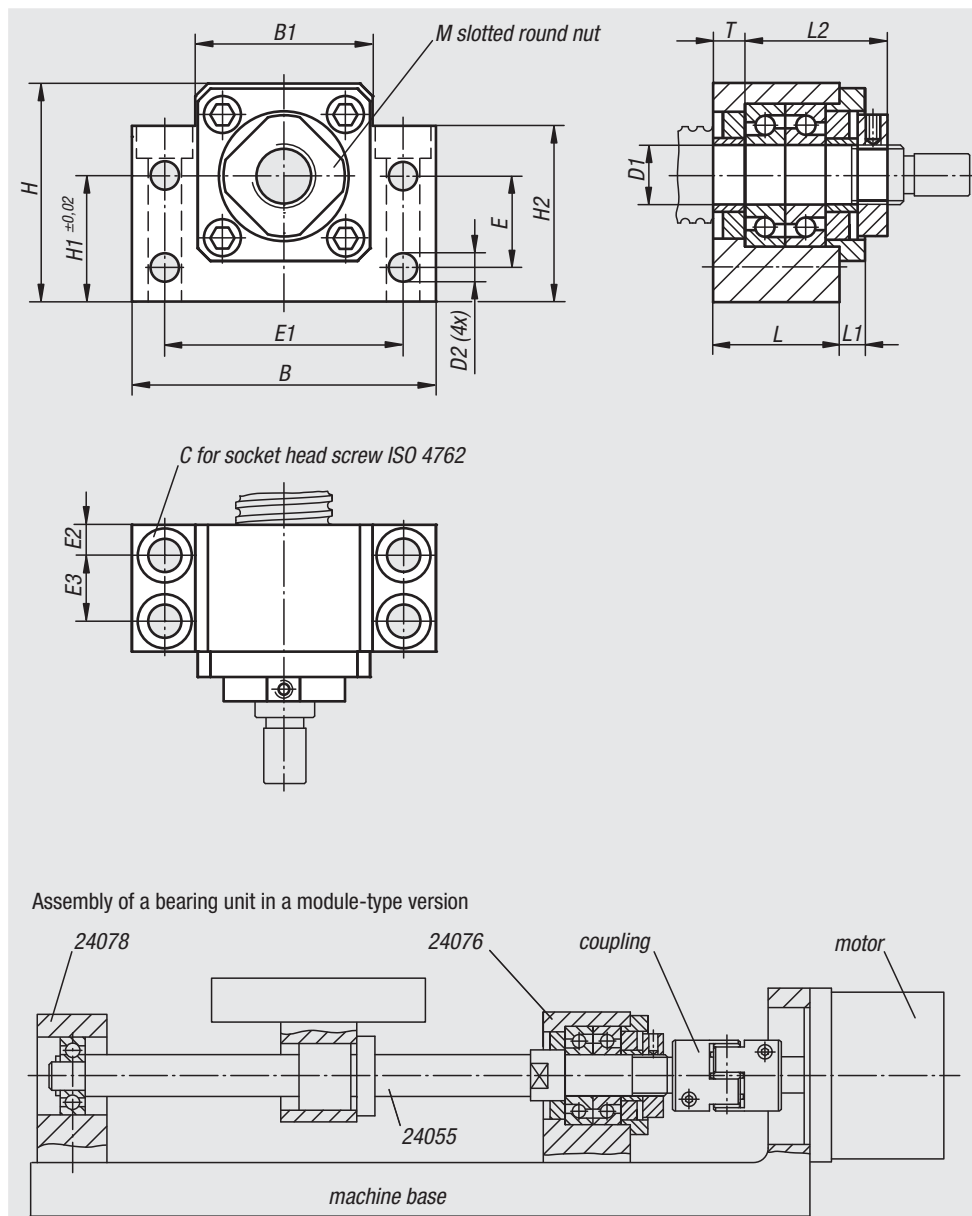


**Material:**  
Housing, steel

**Surface finish:**  
Housing, black oxide finish

**Sample order:**  
nlm 24076-010

**Note:**  
The shaft height of the spindle bearings is aligned with the loose bearing unit 24078. The solid bearing units are composed of a housing with 2 angular contact thrust ball bearings with seals. Pre-stressed by a prefixed flange. With circlips and a lock nut.



Order No.	Size	B	B1	C	D1	D2	E	E1	E2	E3	H	H1	H2	L	L1	L2	M	T
24076-010	10	60	34	M6	10	5,5	15	46	6	13	39	22	32,5	25	5	29	M10x1	5
24076-012	12	60	35	M6	12	5,5	18	46	6	13	43	25	35	25	5	29	M12x1	5
24076-015	15	70	40	M6	15	5,5	18	54	6	15	48	28	38	27	9	32	M15x1	6
24076-017	17	86	50	M8	17	6,6	28	68	8	19	64	39	55	35	8	44	M17x1	7
24076-020	20	88	52	M8	20	6,6	22	70	8	19	60	34	50	35	8	43	M20x1	8

Order No.	Dynamic base loads N	Static base loads N	Stiffness K (N/μm)	Approx. weight kg
24076-010	6080	450	65	0,360
24076-012	6660	550	88	0,390
24076-015	7600	630	100	0,560
24076-017	13700	1390	125	1,020
24076-020	12700	1160	140	1,050