

## Portable Intensifier System M- HC7 (up to 800 bar)



### Description

The miniBOOSTER M- HC7 Portable Intensifier System is a rugged unit designed for demanding industrial applications.

The M- HC7 can be used with any low pressure (20 to 200 bar) power source providing a minimum flow of 2 lpm. Output pressure as high as 800 bar.

Reliability is a primary design consideration. The M- HC7 is equipped with a 10- micron filter and a visual filter condition indicator. Service life is extended and down- time avoided.

### Dimensions

Height: 321mm  
Width: 146 mm  
Length: 315 mm  
Weight: 10 kg

### Portability and ease of operation

With a weight of only 10 kg and a convenient lifting handle, the M- HC7 can be easily carried to where it is needed.

The M- HC7 operates from an existing low pressure hydraulic supply. No additional utilities are required. All controls are incorporated into the unit provide simple and reliable performance.

Time is money: The M- HC7 can deliver up to 15 lpm and is designed to ensure that system capacity is directed to your process until intensification is required. Cycle times are minimized.

Many applications require that the unit provide exceptional accuracy. The M- HC7 is proven with an easy- to- read 4" diameter pressure gauge to permit accuracy to be controlled within 1%.

### Specifications

- 1 pcs.Manifold with handle
- 1 pcs.HC7 miniBOOSTER Intensifier
- 1 pcs.Pressure relief valve
- 1 pcs.4/3 manual directional valve
- 1 pcs.Pressure filter 10 micron
- 1 pcs.High pressure gauge 0 - 1000 bar
- 1 pcs.Sequence valve
- 1 pcs.Check valve
- 1 pcs.Filter Condition Indicator visual

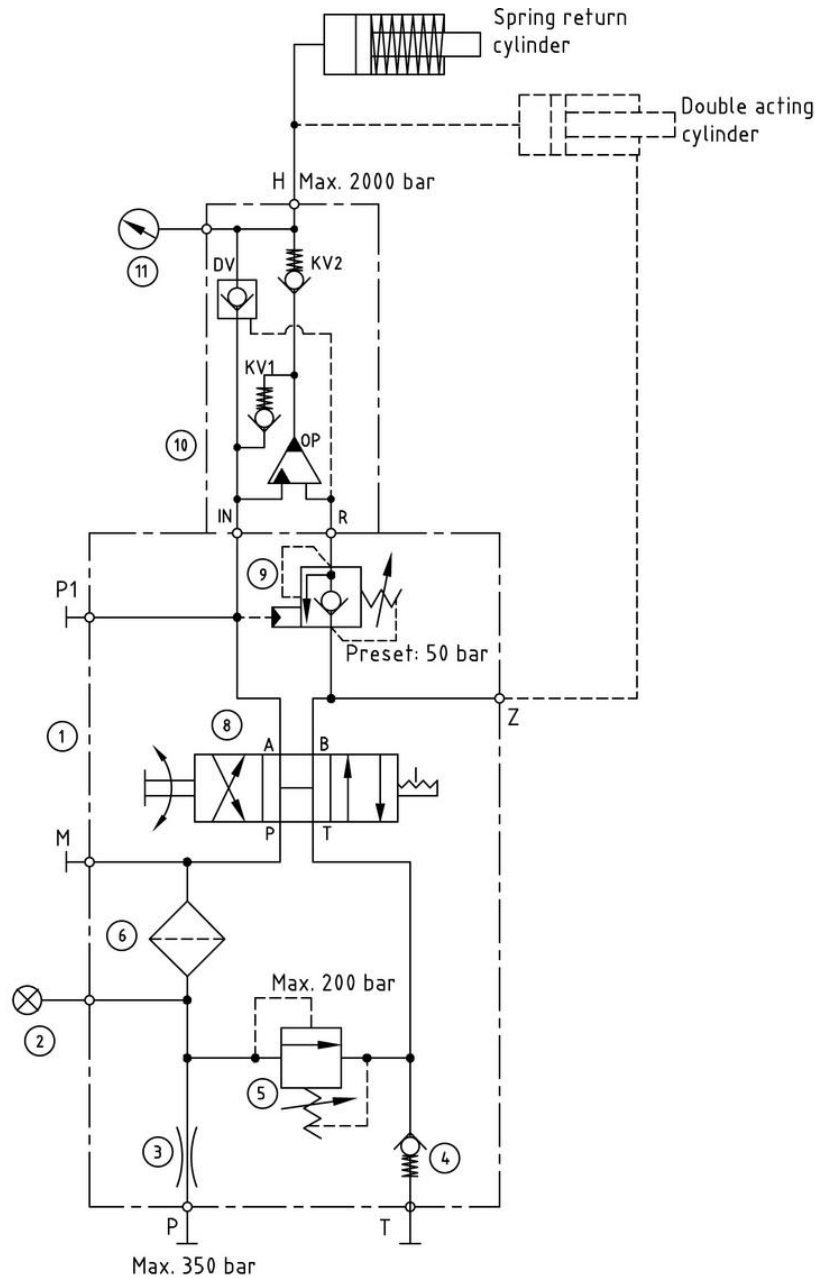
IN and T port: G 1/4" BSP  
HP port: H 1/4" BSP cone 120°

## Mounting options

The M- HC7 intensifier system can be tailor made to match your application with following options. Please send us application needs for a proposal.

- Manifold block in Steel PP-805 (for use in hazardous areas, mining and offshore applications)
- Electrical clogging indicator FIL- NG6- CIE
- Electrical solenoid valve (for remote control)
- Flow control valve PA-9F400- S (to reduce the flow - returning a dual acting cylinder)
- Low pressure gauge 0 – 250 bar

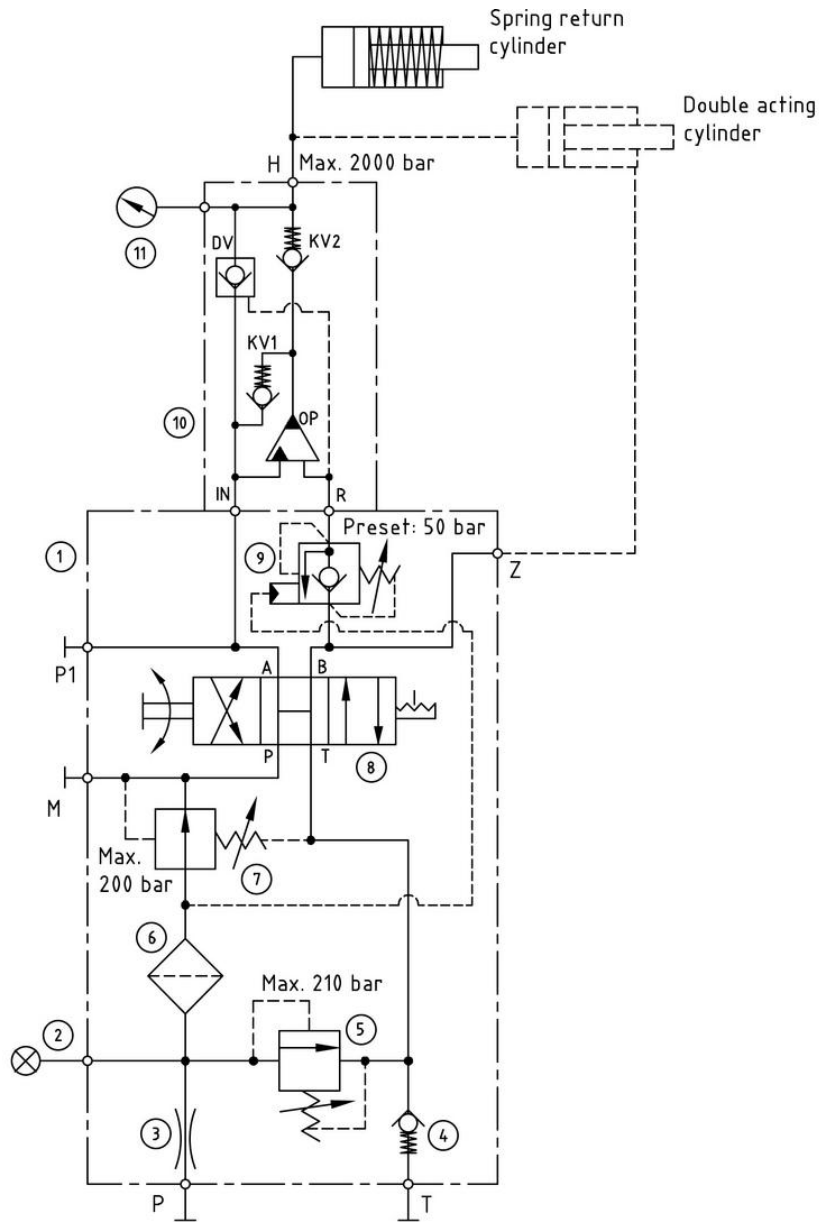
## Functions M- HC7-002



Dimension drawing: PP-120

0-265 Model - Version with pressure relief. For applications with maximum pump pressure of 200 bar.

**Functions M- HC7-102**



0-266 Model - Version with pressure relief and pressure reducing valve. Relief valve can be locked at a maximum value securing the booster and application from being over pressurized.

## Ordering a miniBOOSTER M- HC7

Model	Intensification	Dump Valve	Connections
M- HC7-002	4.0 / 5.0	B = (yes)	12
M- HC7-102	4.0 / 5.0	G (direct proportionally controlled)	13

## Ordering example of a miniBOOSTER M- HC7

An intensifier system M- HC7 for 800 bar with pressure relief and pressure reducing valve.  
Mounted with a HC7 with i = 4.0, H1 M22 x 1.5 and H2 19/16-18 UNF.  
DV incorporated and BSP connections: HC7 - 4.0 - B - 12  
For alternative high pressure connections se HC7 datasheet.

**M- HC7-002 – 4.0 – B – 12**