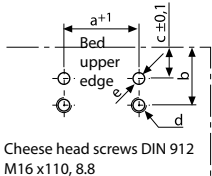
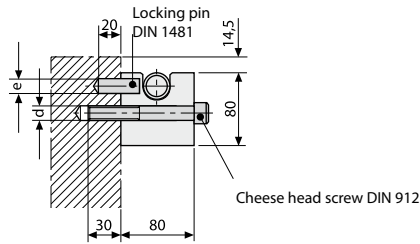




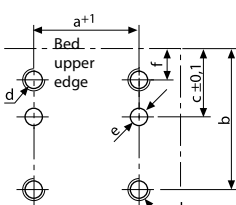
## Console 20 - 40 kN



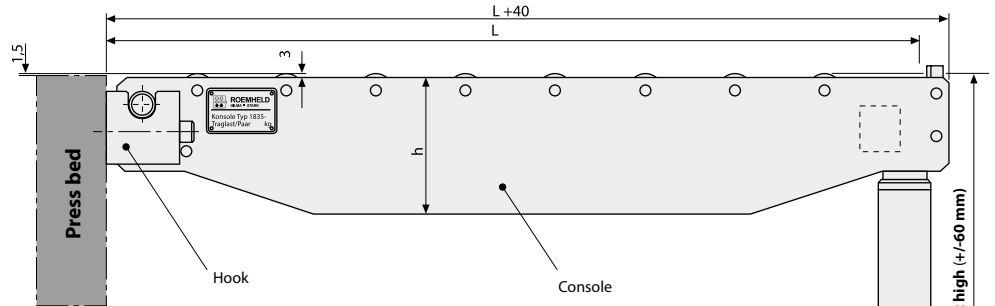
Cheese head screws DIN 912  
M16 x110, 8.8  
M<sub>s</sub> = 120 Nm  
Locking pin DIN 1481 Ø16 x 40



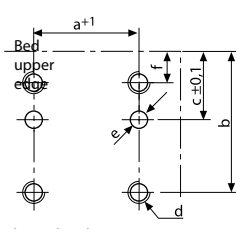
## Console 60 - 100 kN



Cheese head screws DIN 912  
M16 x 50 und M16 x 110  
M<sub>s</sub> = 120 Nm  
Locking pin DIN 1481 Ø16 x 50



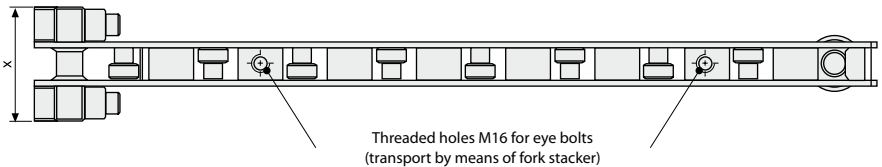
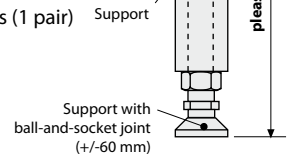
## Console 160 - 250 kN



Cheese head screws DIN 912  
M24 x 80 und M24 x 160  
M<sub>s</sub> = 250 Nm  
Locking pin DIN 1481 Ø20 x 100

**When ordering, please specify the exact height of support**

Scope of supply: 2 carrying consoles (1 pair)  
4 hooks  
2 supporting feet



Part no. for 1 pair	Max. load/pair (kN)	Length of support (L) (mm)	Dimensions (mm)								Weight/pair (kg)
			a+1	b	c <sup>±0.1</sup>	d	e	f	h	x	
8.1835.3001	20	1000	86	60	30	M16	Ø16	-	150	125	60
8.1835.3102	20	1250	86	60	30	M16	Ø16	-	180	125	80
8.1835.3003	20	1600	86	60	30	M16	Ø16	-	200	125	100
➤ 8.1835.3204	40	1000	86	60	30	M16	Ø16	-	200	125	70
➤ 8.1835.3205	40	1250	86	60	30	M16	Ø16	-	200	125	85
8.1835.3206	40	1600	86	60	30	M16	Ø16	-	225	125	110
8.1835.3209	60	1000	91	105	45	M16	Ø16	20	200	125	75
8.1835.3210	60	1250	91	105	45	M16	Ø16	20	220	125	90
➤ 8.1835.3211	60	1600	91	105	45	M16	Ø16	20	240	125	120
8.1835.3212	60	2000	91	105	45	M16	Ø16	20	270	125	170
8.1835.3213	100	1250	91	105	45	M16	Ø16	20	250	125	100
8.1835.3214	100	1600	91	105	45	M16	Ø16	20	280	125	140
8.1835.3215	100	2000	91	105	45	M16	Ø16	20	320	125	180
8.1835.3216	160	1600	160	145	75	M24	Ø20	30	260	210	240
8.1835.3217	160	2000	160	145	75	M24	Ø20	30	260	210	330
8.1835.3218	160	2500	160	145	75	M24	Ø20	30	280	210	480
8.1835.3220	250	2500	160	145	75	M24	Ø20	30	360	210	540

4 hooks and 2 supports are supplied with the consoles  
➤ available at short notice

**Example of ordering: 8.1835.3001, SH 1000**  
console 1000 mm long  
max. 20 kN  
height of support 1000 mm

1 additional set of hooks (= 4 OFF)  
**part no. 7.1835.0007** (40 kN),  
**part no. 7.1835.0021** (100 kN),  
**part no. 7.1835.0022** (250 kN)